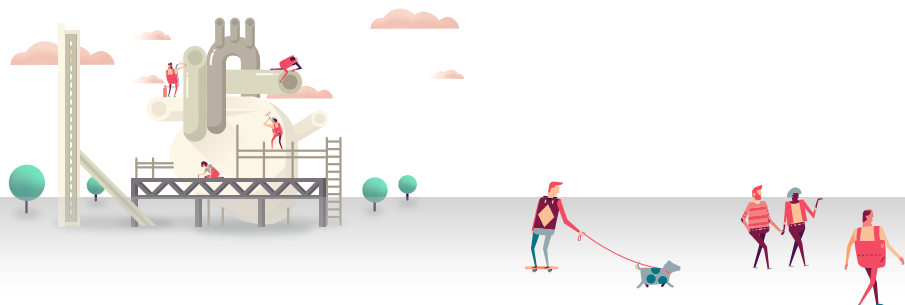


**There's a link
between HIV
& heart disease.**

**REPRIEVE
is looking to
get ahead of
the problem.**



Randomized Trial to Prevent Vascular Events in HIV



People living with HIV are 50–100% more likely to develop heart disease (including heart attack and stroke) than people without HIV.

REPRIEVE is a clinical research trial exploring long-term prevention of heart disease among people living with HIV.

We need HIV+ volunteers between the ages of 40 and 75 to be a part of this study.

Learn more about the REPRIEVE trial and how to sign up!

Call: 1-877-29-HEART
www.reprievetrial.org

